

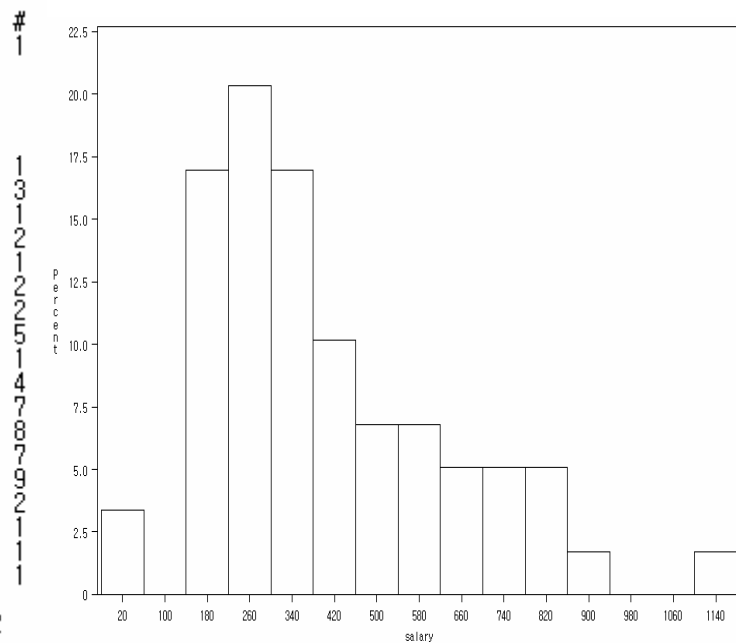
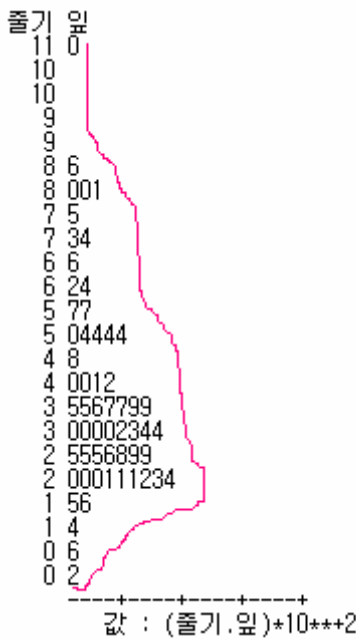
Homework #1

```
data one;
infile 'C:\Documents and Settings\소순우.70XLNTY21LXMN6Z\바탕 화면\ceo.txt';
input age salary;
run;

proc print data=one;
run;

proc univariate data=one plot mu0=350;
histogram salary / midpoints=20 to 1200 by 80;
var salary;
run;
```

1 (salary) stem and leaf plot



적률

N	59	가중합	59
평균	404.169492	관측치 합	23846
표준편차	220.533534	부산	48635.0397
왜도	0.93966679	첨도	0.65847105
제곱합	12458658	수정 제곱합	2820832.31
변동계수	54.5646168	표준 오차 평균	28.7110207

1 가

()

